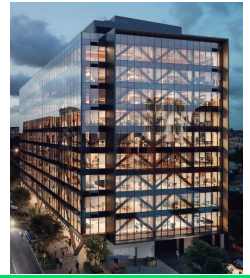




CHRISTOPHE GERBER *BE(Struct)(Timber) PhD(UTS)*

- Associate Professor of Structural Engineering at the University of the Sunshine Coast.
- Over 35 years' experience in timber construction and engineered structures in Australia and Europe.



WORKSHOP SUMMARY **16 hours of CPD**

Learn about the latest advances of timber design and engineering in multi-storey buildings and commercial constructions. The ETIA Timber Design Workshop: Module Two is targeted to design professionals interested in furthering their skills and confidence to design with timber materials in large scale buildings.

The workshop presents Australian and international design practice for mid-rise buildings and long-span structures (floors and portal frames). It vulgarises timber-based products and structures and their structural behaviours, and details the design of connections by the European Yield Model to facilitate the selection of timber materials and construction solutions, and produce cost-effective, durable, sustainable and aesthetically pleasing structures.

The workshop well balances presentations, examples and tutorials with solutions.

DAY 1 (8.30am - Zoom invite will be emailed)

9.00 - 11.00 Session 1

- TIMBER PRODUCTS AND ENGINEERED WOOD PRODUCTS

- Wood essentials.
- Timber products including grading of solid wood.
- Engineered Wood Products (EWPs) – Glulam (GL), Laminated Veneer Lumber (LVL) and Cross-Laminated Timber (CLT).
- Tutorial.

11.00 - 11.15 Morning Break

11.15 - 1.00 Session 2

- STRUCTURAL APPLICATIONS OF TIMBER MATERIALS

- Structural applications of timber products and EWPs.
- Essentials of timber design as per AS 1720.1.
- Tutorial.

1.00 - 1.30 Lunch Break

1.30 - 3.00 Session 3

- MID RISE TIMBER CONSTRUCTION

- Design essentials of Mid-Rise Timber Construction.
- Examples as per Wood Solutions Technical Design Guides.
- Tutorial.

3.00 - 3.15 Afternoon Break

3.15 - 5.00 Session 4

- MID RISE TIMBER CONSTRUCTION (CONTINUED)

- Detailing, prefabrication and assembly.
- More examples as per Wood Solutions Technical Design Guides.
- Tutorial.

DAY 2

9.00 - 11.00 Session 5

- TIMBER FLOOR COMPOSITES

- Design fundamentals of timber composites.
- Long span floors including cassette floors.
- Examples as per Wood Solutions Technical Design Guides.
- Tutorial.

11.00 - 11.15 Morning Break

11.15 - 1.00 Session 6

- TIMBER FLOOR COMPOSITES (CONTINUED)

- Timber concrete composites (TCCs).
- Examples as per Wood Solutions Technical Design Guides.
- Tutorial.

1.00 - 1.30 Lunch Break

1.30 - 3.00 Session 7

- CONNECTIONS

- Design of timber connections as per AS 1720.1 and Eurocode 5 (European Yield Model, EYM).
- Design of screw connections.
- Tutorial.

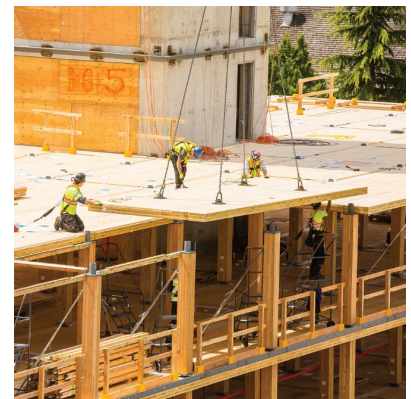
3.00 - 3.15 Afternoon Break

3.15 - 5.00 Session 8

- CONNECTIONS (CONTINUED)

- Design of pin connections with fin plates.
- Tutorial.

Certificate of Attendance will be emailed



Livestreamed via  **zoom**

• Two day course – **\$1,510**

FURTHER INFORMATION

- (02) 9899 7447
- +61 413 998 031
- registrations@etia.net.au

• To register,
visit our website
www.etia.net.au
OR scan the QR
Code.

