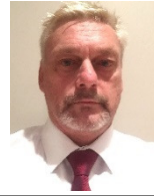




PAUL UNO *BE MBdgSc MIEAust CPEng NER RPEQ*

- Over 40 years of experience in the design and construction industry.
- UNSW Sessional Lecturer at the School of Construction Management.



ROSS FINNIE

- Over 40 years of experience in the construction industry.
- Over 34 years of experience in managerial roles, site foreman, site manager, project manager, construction manager, IMS manager and Safety.

WORKSHOP SUMMARY

Effective risk management can benefit a whole range of areas. Those processes may be structural or mechanical engineering design. It may also be at the planning, and implementation stages of a building construction or the safety aspects on a civil engineering or construction site.

A key component of safety that will be discussed in detail is the "PCBU" (ie. Person Conducting a Business or Undertaking).

All these issues must still focus on doing the right projects, at the right time, for the right reasons.

The course is 10 hours in length which satisfies IEAust requirements for minimum CPD accrual in this area of Risk. It will conclude with a 1 hour examination.

A certificate will be issued in due course to all attendees (once the papers have been marked).

PROGRAMME (7.30 - 8.00 Registration)

8.00 - 10.00 Session 1 (Paul Uno)

- RISKS & FAILURES IN THE ENGINEERING & BUILDING INDUSTRY

- Construction and engineering failures both in Australia and overseas where risks were taken or oversights made which resulted in on-site failures and fatalities.
- Lessons learnt from these failures to avoid the risk in future projects.
- Risk issues in the mechanical, electrical and process engineering fields.

10.00 - 10.30 Morning Tea

10.30 - 12.30 Session 2 (Ross Finnie)

- WHS RISK MANAGEMENT

- Legal obligation of PCBU's, workers, officers and managers with regards to the WHS legislative framework.
- Particular focus on Harmonisation, Due Diligence, Duty of Care (Officers and their Obligations), Fingerprints, Manage Risk and Leadership.

12.30 - 1.30 Lunch (Provided at Venue)

1.30 - 3.00 Session 3 (Ross Finnie)

- HIGH RISK CONSTRUCTION WORK & MANAGING RISK

- 19 categories of High Risk Construction Work (HRCW)
- Key factors include:
 - Understand the importance of detailed development of Safe Work Method Statements.
 - Understand the importance of Risk Assessments covering the tasks carried out on site, how to manage them; reduce risk and methods of ongoing monitoring.
 - How a SWMS ties in with a Project Risk Assessment.

3.00 - 3.30 Afternoon Tea

- 10 HOUR COURSE (8AM - 6PM)

IE Aust CPEng requirement

- Class sizes limited to max. 15

- Live streaming option available

3.30 - 5.00 Session 4 (Ross Finnie)

- SAFETY IN DESIGN

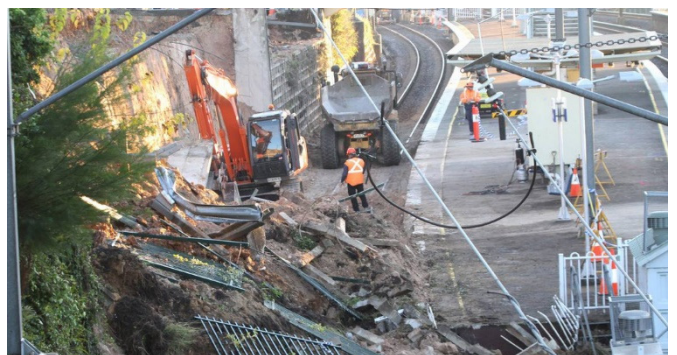
- Overview of design documentation which can be coordinated by the PCBU and attended by appropriately qualified personnel and key stakeholders (ie. the Client, Designer, Construction team, Architect; Service and Structural Engineers and the Client where practicable) prior to issue.
- Examples of safety in design literature, and examples of safety in design failure and methods of alert and awareness.

5.00 - 6.00 Session 5 (Ross Finnie)

- EXAMINATION ASSESSMENT

- Examination will cover all sessions.

6.00 - 6.15 Certificate of Attendance & Feedback sheets



COURSE COST

- 1 day course – \$900 pp

DATES, VENUES & REGISTRATION

- Registration form (back of catalogue)
- Visit our website www.etia.net.au

FURTHER INFORMATION

- Office (02) 9899 7447
- Mobile 0413 998 031
- Email registrations@etia.net.au