


PAUL UNO
BE MBdgSc MIE(Aust) CPEng NER RPEQ

- Over 40 years of experience.
- UNSW Sessional Senior Lecturer.
- Inspected structures and written reports on why structures have failed.

Recommended Text:
**Reinforced Concrete:
The Designers
Handbook**

 (2015 Revised Edition)
Beletich, Hymas, Reid and Uno


WORKSHOP SUMMARY

This one day workshop is primarily aimed at civil and structural engineers who wish to design retaining walls. These can be either gravity walls (eg solid block, crib wall, hollow core or concrete filled masonry block) or reinforced walls (eg reinforced concrete cantilever, reinforced masonry and/or soil reinforced geo-fabric).

Australian Design Standards such as AS3700, AS3600 and AS4678 and their requirements as well as Eurocode provisions will be addressed.

All sessions provide worked examples, tutorial exercises and solutions.

PROGRAMME (8.30 - 9.00 Registration)

9.00 - 10.30 Session 1

- SOIL CLASSIFICATIONS, TESTS & SOIL MECHANICS

- Soil Basics – Bulk vs Dry vs Saturated vs Submerged Density
- Angle of Repose vs Angle of Internal Friction
- Cohesion vs Shear Strength
- Proctor Density Test vs HILF Density Classification
- Clay vs Sand Basic Soil Type Classification to AS1726
- Shear Box Test vs Oedometer Test vs Triaxial Test
- Unit Weights of Various Soils
- Cracked vs Uncracked Soils
- Soil Parameters in AS4678 (Earth Retaining Structures)
- Australian Standards vs Eurocode
- Active vs Passive Pressure
- Coulomb vs Rankine Theory
- Pore Pressures
- Drained vs Undrained Soils
- Friction Angle vs Grading vs SPT values
- Atterberg Limits (LL PL PI) vs Friction Angle
- Factors of Safety – Ultimate vs Serviceability
- AS4678 Six (6) Retaining Wall Failure Modes
- Tutorial

10.30 - 11.00 Morning Tea

11.00 - 12.30 Session 2

- RETAINING WALL DESIGN I (Mass/Gravity Structures)

- Types of Gravity Structures eg Hollow vs Solid Masonry, Woven Mesh and Gabion walls
- Crib Block Wall Design Principles
- Timber Retaining Walls Design Principles
- Australian and Overseas Examples of Gravity Retaining Wall Failures
- Modes of Failure eg toe vs base vs slope
- Causes of Retaining Wall Failures eg Rainfall, Incorrect Drainage, Soil Properties, Wall Slope
- Applied Bearing Pressure vs Ultimate Bearing Capacity
- Bearing Capacity Theories eg Terzaghi vs Meyerhof vs Vesic vs Hansen
- Design Methods addressing Bearing Capacity and Failure by Overturning, Slip and Rotation
- Tutorial

12.30 - 1.30 Lunch (Provided at Venue)

1.30 - 3.00 Session 3

- RETAINING WALL DESIGN AND DETAILING II (Reinforced Structures)

- Types of Reinforced Retaining Wall Structures eg In-situ Concrete, Reinforced Masonry Block
- Australian and Overseas Examples of Reinforced Retaining Wall Failures
- Australian Standards vs Eurocode requirements for Reinforced Retaining Walls
- Full Design of Cantilever Wall Systems including Stability Checks
- Estimating Dimensions of Reinforced Concrete Retaining Walls & Footings (Rules of Thumb)
- Curtailment of Reinforcement (where required)
- PVC formwork systems (eg CSR Rediwall)
- Shear Key Design (if required)
- Retaining Wall Software
- Tutorial

CALCULATORS REQUIRED

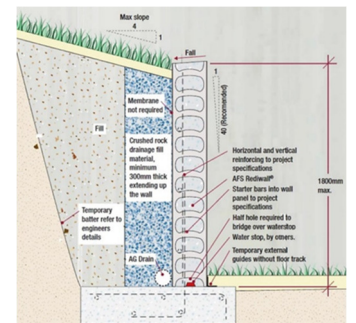
3.00 - 3.30 Afternoon Tea

3.30 - 5.00 Session 4

- RETAINING WALL DESIGN AND DETAILING III (Reinforced Walls using Geofabrics)

- Types of Geofabric materials used in Reinforced Retaining Wall Structures
- Use of Geofabrics as Horizontal Wall Reinforcement
- Australian and Overseas Examples of Reinforced Retaining Wall Failures using Geofabrics
- Australian Standards vs Eurocode requirements for Geofabric Reinforced Retaining Walls
- Full Design of Cantilever Wall Systems using Geofabrics including Stability Checks
- Estimating Dimensions of Geofabrics for Reinforced Concrete Retaining Walls
- Wedge vs Pullout Failure using Geofabrics
- Geofabric reinforcement layout
- Tutorial

5.00 - 5.15 Certificate of Attendance & Feedback sheets



COURSE COST

- 1 day course – **\$800 pp**

DATES, VENUES & REGISTRATION

- Registration form (back of catalogue)
- Visit our website www.etia.net.au

FURTHER INFORMATION

- Office (02) 9899 7447
- Mobile 0413 998 031
- Email registrations@etia.net.au